



PRRIP – ED OFFICE MEMORANDUM

TO: GOVERNANCE COMMITTEE
FROM: EXECUTIVE DIRECTOR'S OFFICE
SUBJECT: TRACT 1910 EVALUATION SUMMARY AND RECOMMENDATION
DATE: NOVEMBER 19, 2019
CC: LAND ADVISORY COMMITTEE

I. REQUESTED GOVERNANCE COMMITTEE ACTION

The Land Advisory Committee (LAC) requests that the Governance Committee (GC) approve the initiation of formal negotiations for acquisition of tract 1910. The LAC also requests that the GC assign the negotiations to the Executive Director's Office and provide the Executive Director with instruction on acceptable acquisition terms.

II. LAC RECOMMENDATION

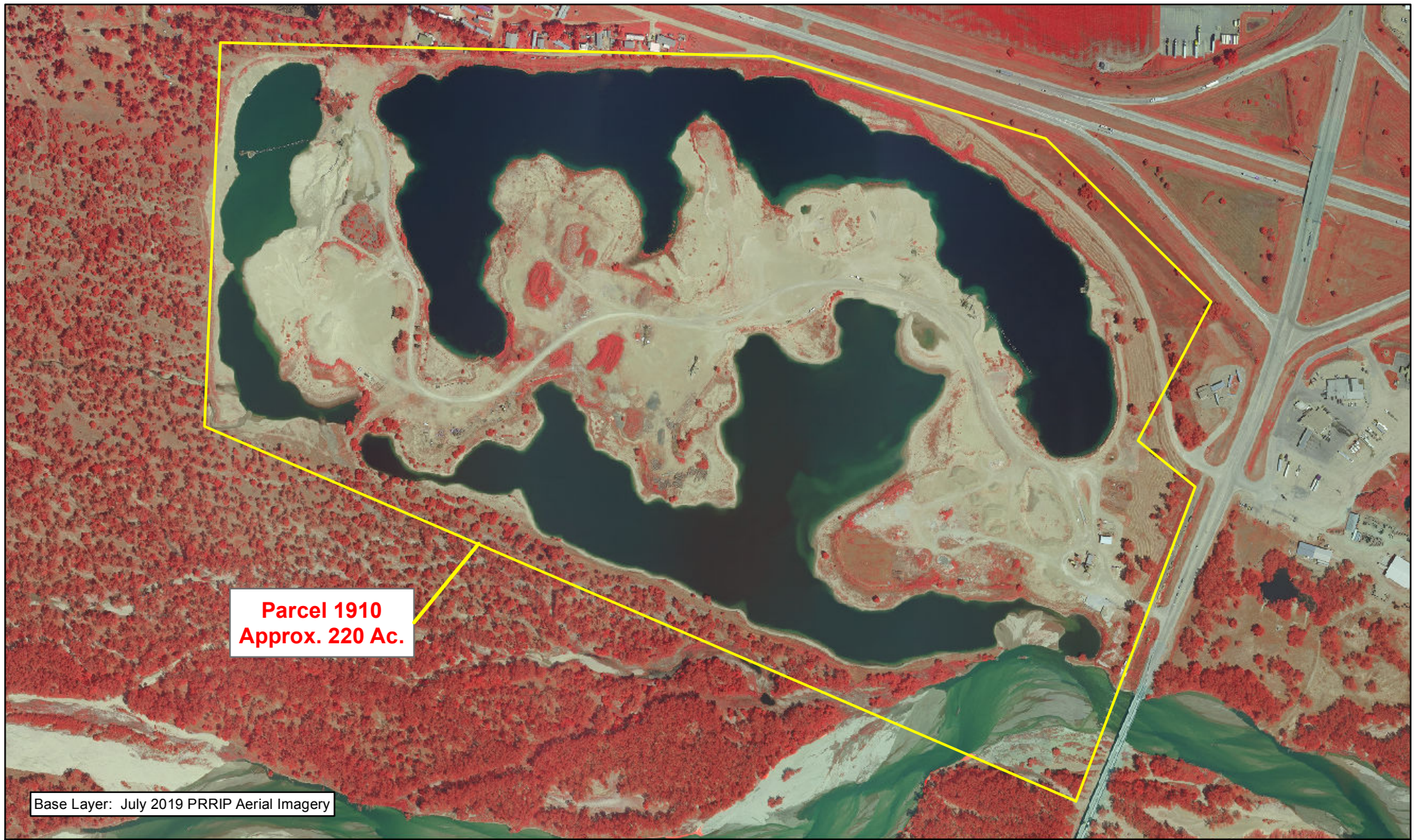
On October 29, 2019, the LAC voted to accept the evaluation team's recommendation and forward Tract 1910 to the GC with a recommendation to pursue acquisition of this tract as non-complex off-channel sand and water habitat. The LAC felt that 1910 has great restoration potential and is configured well for least tern and piping plover habitat. This pit is a very low-cost option when compared to constructing new OCSW habitat via excavation.

III. TRACT DESCRIPTION

Tract 1910 is approximately 220 acres in size and is located in Sections 19 and 20, T-9N, R-21W (Figure A-1). The tract is located adjacent to the Lexington to Overton bridge segment (Figure A-2). While this is not within the identified Program associated habitat, the boundary of this property directly abuts the associated habitat. Since the habitat value of this tract may be high, it is being given consideration for inclusion in the Program.

IV. HABITAT CONSIDERATIONS

The evaluation team recommends that the entire tract be considered as non-complex acres towards the off-channel sand and water goal. Tract 1910 requires minimal restoration and could potentially reach 80 acres of nesting area. Restoration activities would include sparse vegetation removal and minor reshaping of some peninsulas to remove mounds and soften slopes. Mining activities on this tract are nearly completed, and the site would be completely habitat-ready likely within the first year after acquisition.




Base Layer: July 2019 PRRIP Aerial Imagery

Legend

 1910

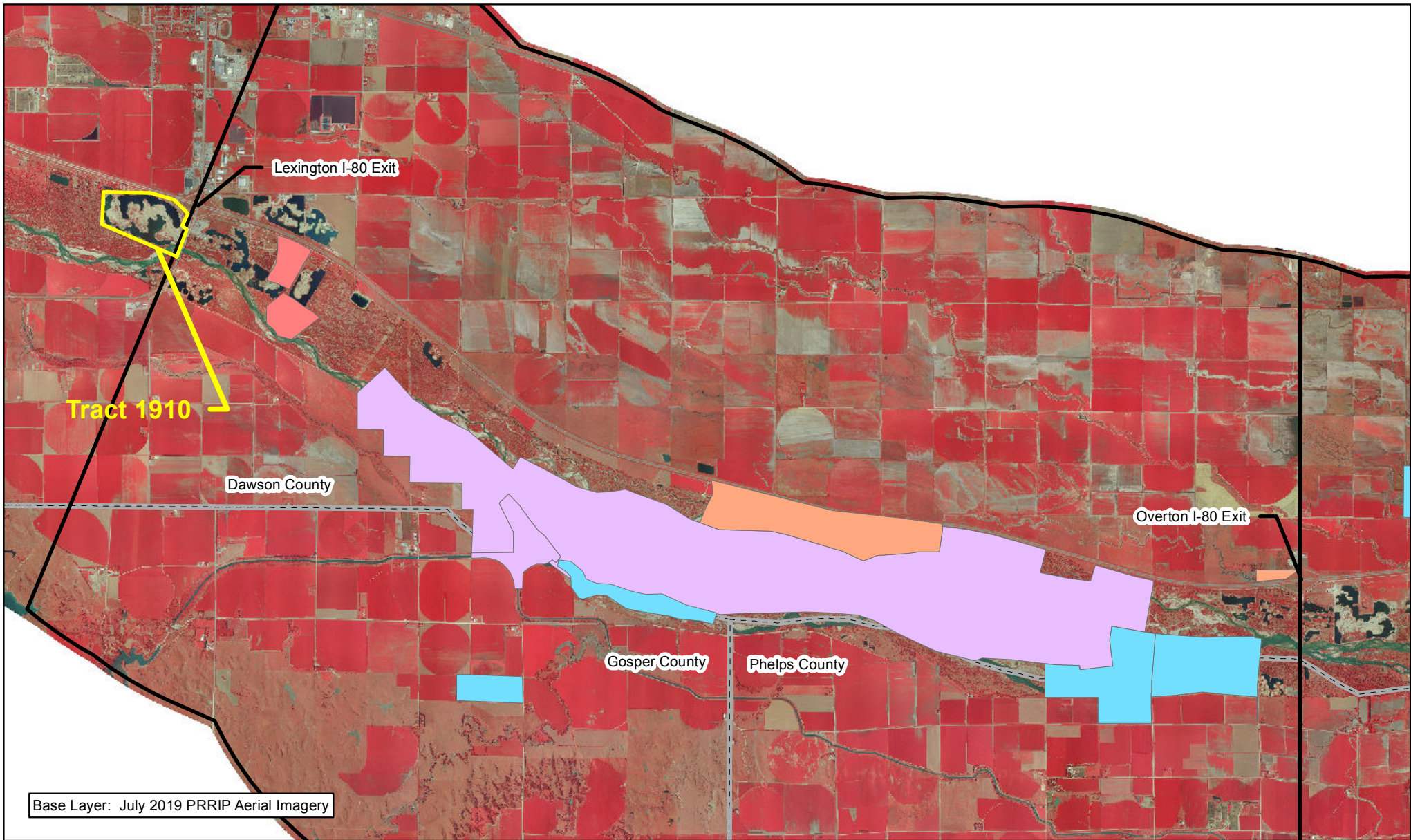


 Miles
0.2

**TRACT 1910
BOUNDARY MAP**

Parcel Evaluation
Date: 8/16/19
By: JDB

Figure A-1



Legend

1910

Associated Habitat

Audubon

CNPPID

Ducks Unlimited

NGPC

NPPD

PRRIP

PRWCT

TNC

USFWS

County



Miles

2

TRACT 1910 LOCATION MAP

Parcel Evaluation

Date: 8/16/19

By: JDB

Figure A-2